



The Global Language of Business

# Warehouse Outbound Instruction and Notification Business Message Standard (BMS)

*Release 3.7, Ratified, Mar 2025*



## Document Summary

Document Item	Current Value
Document Name	Warehouse Outbound Instruction and Notification Business Message Standard (BMS)
Document Date	Mar 2025
Document Version	3.7
Document Issue	1
Document Status	Ratified

## Work Request Reference

Date of WR Submission to GSMP:	WR Submitter(s):	Refer to Work Request (WR) Number(s):
09-Jul-2013	Philips N.V.	WR 13-000106
07-May-2014	GS1 Germany	WR 14-000074
25-Jun-2014	GS1 Global Office	WR 14-000110
03-Oct-2018	GS1 GO	18-000319

## Business Requirements Document (BRAD) Reference

BRAD Title	BRAD Issue Date	BRAD Version
Warehousing Inbound and Outbound processes	25-Jul-2012	1.0

## Document Change History

Date of Change	Version	Changed By	Reason for Change	Summary of Change
12-Jan-2012	BMS 3.0 – Issue 1	Mark Van Eeghem	BMS Release 3.0	See summary of changes
01-May-2013	BMS 3.1 – Issue 1	Coen Janssen	BMS Release 3.1	See summary of changes
15-Sep-2014	BMS 3.2 – Issue 1	Ewa Iwicka	BMS Release 3.2	See summary of changes
01-Mar-2017	BMS 3.3 – Issue 1	Ewa Iwicka	BMS Release 3.3	See summary of changes
15-Oct-2018	BMS 3.4 – Issue 1	Ewa Iwicka	BMS Release 3.4	See summary of changes
02-Feb-2021	BMS 3.5 – Issue 1	Miklos Bolyky	BMS Release 3.5	See summary of changes
05-Jan-2022	BMS 3.5.1 – Issue 1	Miklos Bolyky	BMS Release 3.5.1	See summary of changes
01-Mar-2023	BMS 3.6 – Issue 1	Miklos Bolyky	BMS Release 3.6	See summary of changes

Date of Change	Version	Changed By	Reason for Change	Summary of Change
15-Mar-2025	BMS 3.7 – Issue 1	Miklos Bolyky	BMS Release 3.7	See summary of changes

## Disclaimer

GS1 seeks to minimise barriers to the adoption of its standards and guidelines by making the intellectual property required to implement them available, to the greatest extent possible, on a royalty-free basis, or when necessary, under a RAND licence. Such royalty-free and RAND licences are provided pursuant to the GS1 IP Policy (available here: <https://www.gs1.org/standards/ip>), which governs the work of work group participants who contribute to drafting standards and guidelines, including this document. In addition to licences, the GS1 IP Policy provides various benefits and obligations that apply to all implementers of GS1 standards and guidelines, and all implementations of GS1 standards are subject to those terms.

Nevertheless, please note the possibility that an implementation of one or more features of this standard or guideline may be the subject of a patent or other intellectual property right that is not covered by the licences granted pursuant to the IP Policy. In addition, the licences granted under the IP Policy do not include the IP rights or claims of third parties who were not participants in the corresponding standard development work group.

Accordingly, GS1 recommends that any person or organisation developing an implementation of this standard or guideline should determine whether any patents or other intellectual property may encompass such implementation, and whether a licence under a patent or other IP right is needed. The implementer should determine the potential need for licensing in view of the details of the specific implementation being designed in consultation with that party's patent counsel.

The official versions of all GS1 standards and guidelines are provided as PDF files on GS1's online reference directory (<https://ref.gs1.org>) (the "GS1 Reference"). Any other representations of standards or guidelines in any other format (e.g., web pages) are provided for convenience and descriptive purposes only, and in the event of a conflict, the GS1 Reference document shall govern.

THIS DOCUMENT IS PROVIDED "AS IS" WITH NO WARRANTIES WHATSOEVER, EXPRESS OR IMPLIED, INCLUDING ANY WARRANTY OF MERCHANTABILITY, NONINFRINGEMENT, FITNESS FOR PARTICULAR PURPOSE, ACCURACY OR COMPLETENESS, OR ANY WARRANTY OTHERWISE ARISING OUT OF THIS DOCUMENT. GS1 disclaims all liability for any damages arising from any use or misuse of this document, whether special, indirect, consequential, or compensatory damages, and including liability for infringement of any intellectual property rights, relating to use of information in or reliance upon this document.

GS1 makes no commitment to update the information contained herein, and retains the right to make changes to this document at any time, without notice. GS1® and the GS1 logo are registered trademarks of GS1 AISBL.



# Table of Contents

<b>1</b>	<b>Business Domain View .....</b>	<b>5</b>
1.1	Introduction .....	5
<b>2</b>	<b>Business Context .....</b>	<b>5</b>
<b>3</b>	<b>Business Transaction View .....</b>	<b>5</b>
3.1	Business Transaction – Issue Outbound Instruction .....	5
3.2	Business Transaction – Issue Outbound Notification .....	6
<b>4</b>	<b>Business Information View .....</b>	<b>8</b>
4.1	Warehousing Outbound Instruction .....	8
4.2	Warehousing Outbound Instruction – Shipment .....	10
4.3	Warehousing Outbound Instruction – Shipment Item .....	12
4.4	Warehousing Outbound Notification .....	14
4.5	Warehousing Outbound Notification – Shipment .....	16
4.6	Warehousing Outbound Notification – Shipment Item .....	19
4.7	Warehousing Outbound Instruction - Data Types .....	21
4.8	Warehousing Outbound Notification - Data Types .....	21
4.9	Enumerations (message specific) .....	22
4.10	Code Lists .....	22
<b>5</b>	<b>Business Message Examples .....</b>	<b>23</b>
5.1	Example 1 .....	23
5.2	Example 2 .....	24
5.3	Example 3 .....	25
<b>6</b>	<b>Implementation Considerations .....</b>	<b>27</b>
6.1	User Guide .....	27
6.2	Message Specific Considerations .....	27
<b>7</b>	<b>Summary of Changes .....</b>	<b>28</b>
7.1	BMS Release 3.1 .....	28
7.2	BMS Release 3.2 .....	28
7.3	BMS Release 3.3 .....	30
7.4	BMS Release 3.4 .....	32
7.5	BMS Release 3.5 .....	32
7.6	BMS Release 3.5.1 .....	32
7.7	BMS Release 3.6 .....	32
7.8	BMS Release 3.7 .....	32
<b>8</b>	<b>Appendices .....</b>	<b>33</b>
<b>9</b>	<b>Acknowledgements .....</b>	<b>33</b>
9.1.1	Work Group .....	33
9.1.2	Development Team Members .....	35

## 1 Business Domain View

### 1.1 Introduction

#### Message Definition

##### Warehousing Outbound Instruction Message Definition

The Warehousing Outbound Instruction message enables a Logistic Services Client (LSC) to inform his Logistic Services Provider (LSP) that goods need to be shipped.

##### Warehousing Outbound Notification Message Definition

The Warehousing Outbound Notification message enables a Logistic Services Provider (LSP) to inform his Logistic Services Client (LSC) on the status of goods shipped on behalf of the client.

#### Principles

These messages support the warehouse outbound process.

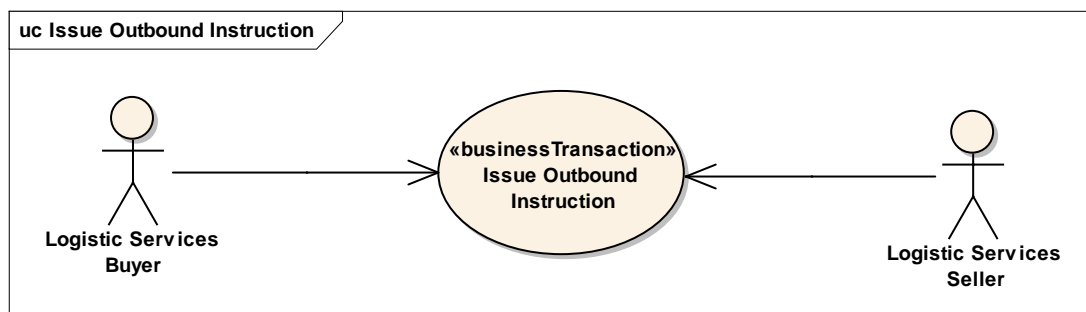
## 2 Business Context

Context Category	Value(s)
Industry	All
Geopolitical	All
Product	All
Process	Warehousing – Outbound Operations
System Capabilities	GS1 System
Official Constraints	None

## 3 Business Transaction View

### 3.1 Business Transaction – Issue Outbound Instruction

#### Use case diagram



#### Use case description

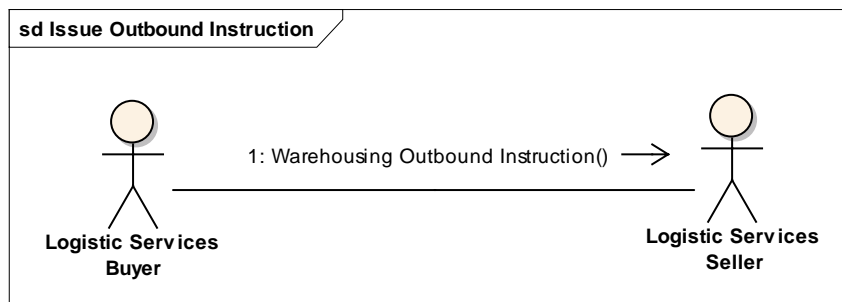
Use Case Name	Issue Warehousing Outbound Instruction
---------------	--

<b>Use Case Description</b>	The Logistic Services Buyer (LSB) informs the Logistic Services Seller (LSS) that a shipment needs to be prepared.
<b>Actors (Goal)</b>	Logistic Services Buyer (LSB) Logistic Services Seller (LSS)
<b>Performance Goals</b>	Not applicable
<b>Preconditions</b>	Item master data of the goods to be shipped have been communicated to the Logistic Services Seller.
<b>Post conditions</b>	The Logistic Services Seller has been informed on the goods to be shipped.
<b>Main Scenario</b>	<ul style="list-style-type: none"> <li>LSB generates the Warehousing Outbound Instruction from his (enterprise resource planning) system.</li> <li>LSB sends the Warehousing Outbound Instruction to the LSS.</li> <li>LSS receives the Warehousing Outbound Instruction.</li> <li>LSS processes the Warehousing Outbound Instruction in his (warehouse management) system.</li> </ul>
<b>Alternative Scenario(s)</b>	Not applicable
<b>Related Requirements</b>	Not applicable
<b>Related Rules</b>	Not applicable

#### Activity diagram

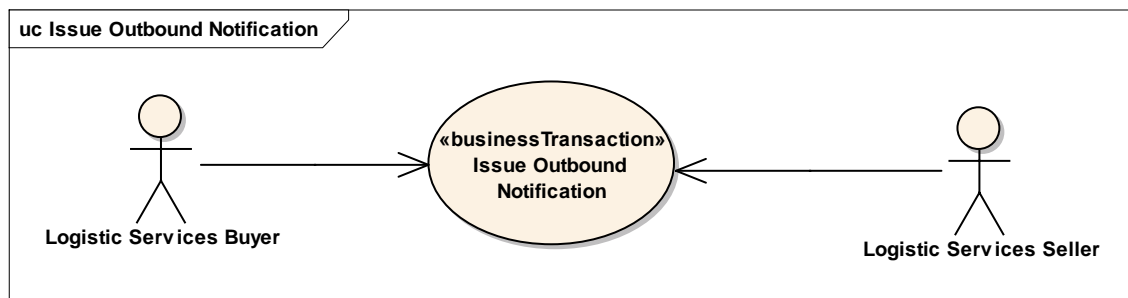
Not applicable

#### Communication diagram



## 3.2 Business Transaction – Issue Outbound Notification

#### Use case diagram



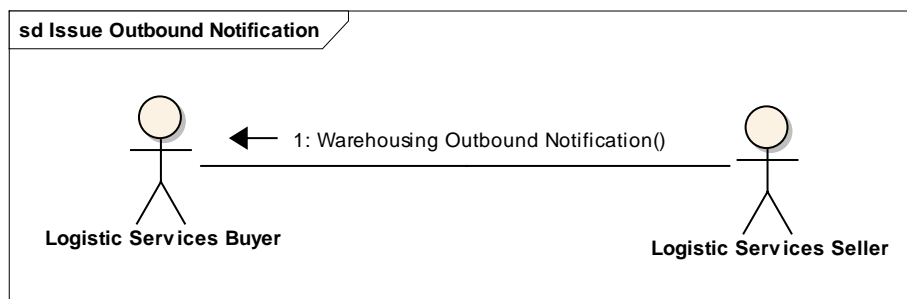
### Use case description

<b>Use Case Name</b>	Issue Warehousing Outbound Notification
<b>Use Case Description</b>	The Logistic Services Seller (LSS) informs the Logistic Services Buyer (LSB) on the status of an outbound shipment that will be / has been prepared.
<b>Actors (Goal)</b>	Logistic Services Buyer (LSB) Logistic Services Seller (LSS)
<b>Performance Goals</b>	Not applicable
<b>Preconditions</b>	<ul style="list-style-type: none"> <li>The Logistic Services Seller has been informed on the goods to be shipped.</li> </ul>
<b>Post conditions</b>	The Logistic Services Buyer has been informed on the status of the outbound shipment.
<b>Main Scenario</b>	<ul style="list-style-type: none"> <li>LSS generates the Warehousing Outbound Notification from his (warehouse management) system.</li> <li>LSS sends the Warehousing Outbound Notification to the LSB.</li> <li>LSB receives the Warehousing Outbound Notification.</li> <li>LSB processes the Warehousing Outbound Notification in his (enterprise resource planning) system.</li> </ul>
<b>Alternative Scenario(s)</b>	Not applicable
<b>Related Requirements</b>	Not applicable
<b>Related Rules</b>	Not applicable

### Activity diagram

Not applicable

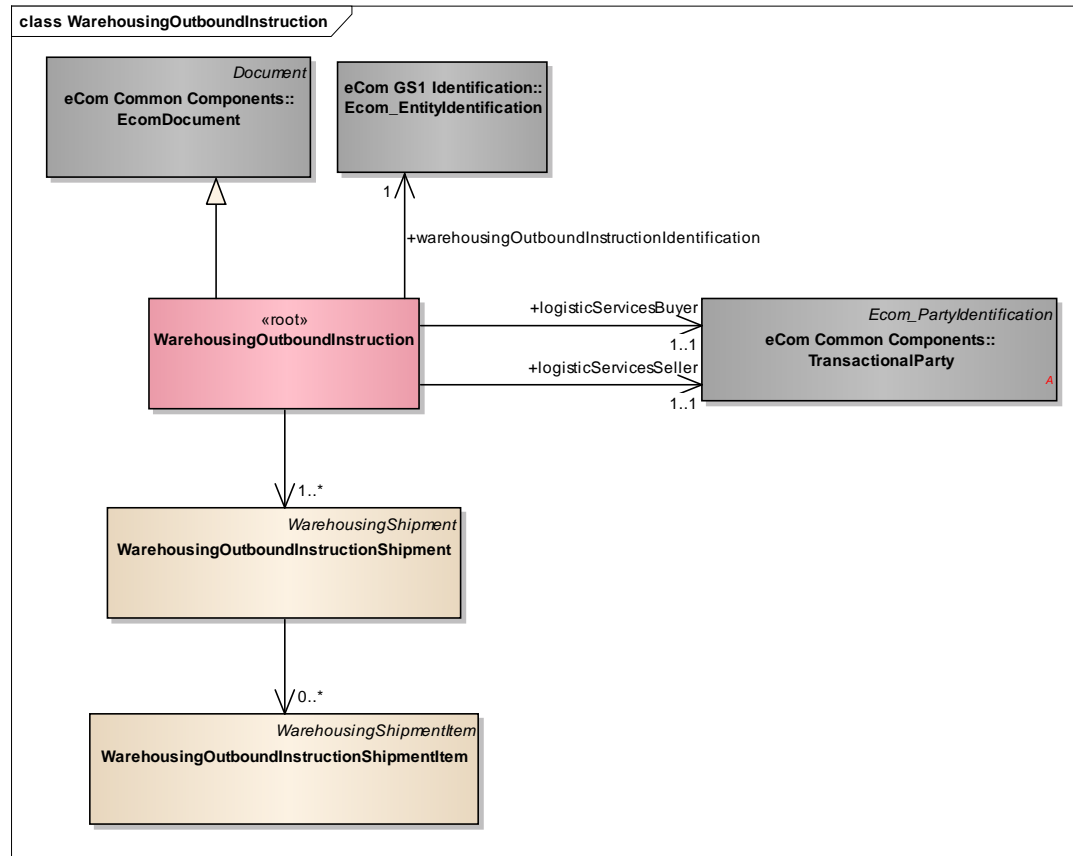
### Communication diagram



## 4 Business Information View

### 4.1 Warehousing Outbound Instruction

#### Class diagram





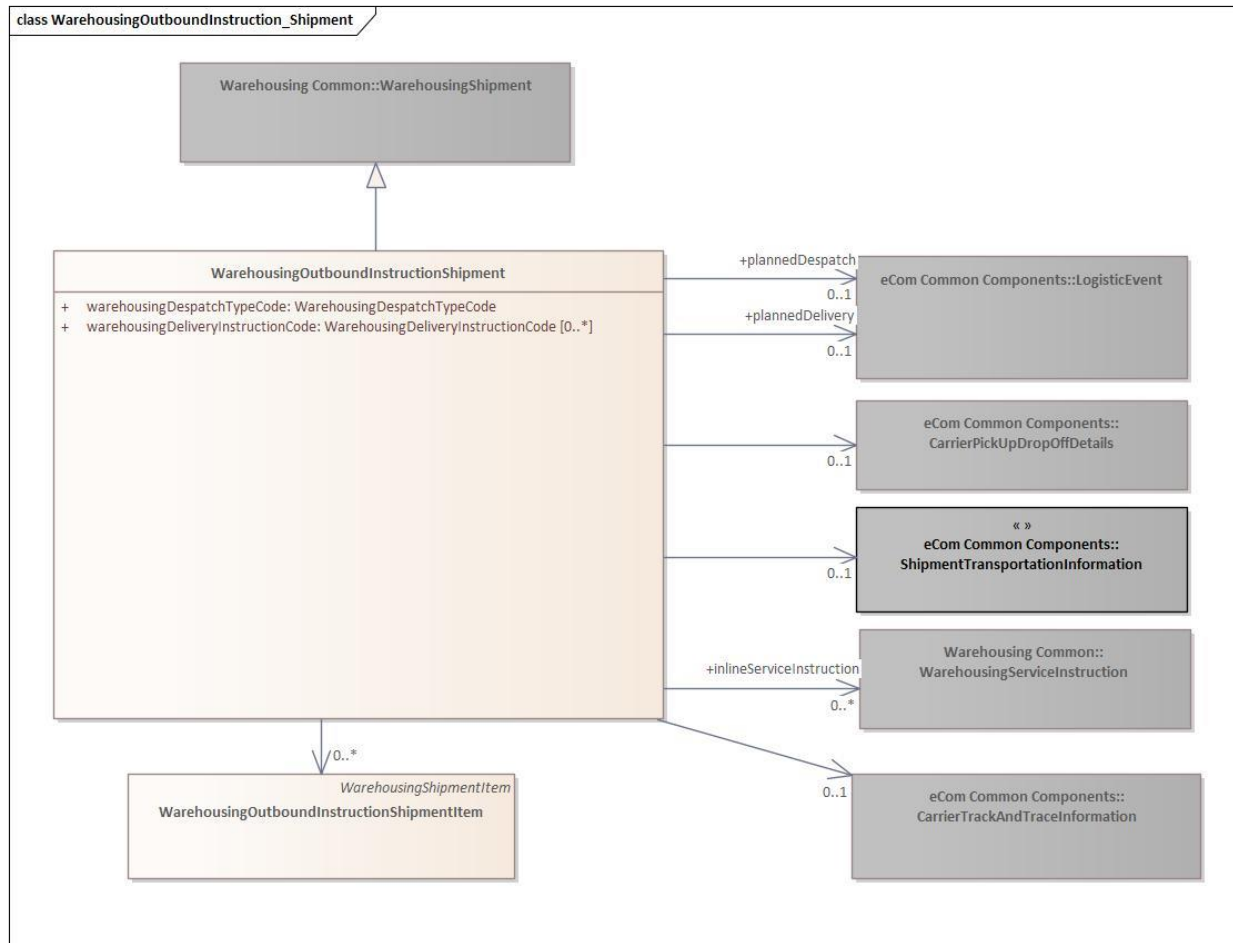
**Report**

The content of the WarehousingOutboundInstruction class, its structure and component definitions can be accessed in the GS1 Navigator: [Message Details](#) | [EDI](#) | [Navigator](#) | [GS1](#)

Content	Attribute / Role	Datatype /Secondary class	Multiplicity	Definition	Requirements
WarehousingOutboundInstruction				Message that supports the warehouse outbound process, and enables a Logistic Services Client (LSC) to inform his Logistic Services Provider (LSP) that goods need to be shipped.	
Association		WarehousingOutboundInstructionShipment	1..*	Information on the shipments that need to be prepared by the logistics services seller.	
Generalization		EcomDocument		Basic information about the content of the message including version number, creation date and time.	[brad-whiop:insdes-1]
Association	logisticServices Seller	TransactionalParty	1..1	A party that provides logistics services to another party.	[brad-whiop:insdes-3]
Association	warehousingOutboundInstructionIdentification	Ecom_EntityIdentification	1..1	The identification of the warehousing outbound instruction document.	[brad-whiop:insdes-1] WR 15-000314
Association	logisticServices Buyer	TransactionalParty	1..1	A party that purchases logistics services from another party.	[brad-whiop:insdes-2]

## 4.2 Warehousing Outbound Instruction – Shipment

### Class Diagram



### Report

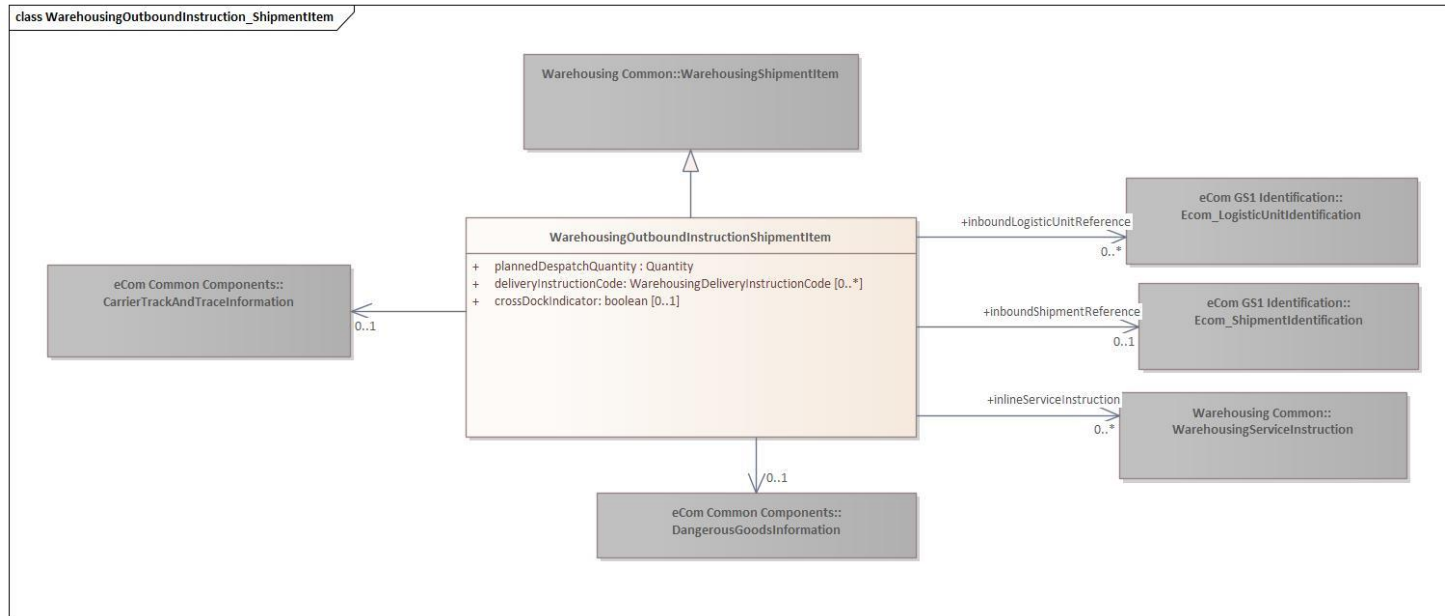
The content of the **WarehousingOutboundInstructionShipment** class, its structure and component definitions can be accessed in the Gs1 Navigator:

[Class Details](#) | [EDI](#) | [Navigator](#) | [GS1](#)

Content	Attribute / Role	Datatype /Secondary class	Multiplicity	Definition	Requirements
WarehousingOutboundInstructionShipment				A shipment is an identifiable collection of one or more Trade Items available to be transported together from the shipper (Original Consignor/Shipper), to the receiver (Final/Ultimate Consignee).	[brad-whiop:insdes-4]
Association	plannedDelivery	LogisticEvent	0..1	Details on the date and time the goods need to be delivered.	[brad-whiop:insdes-4.1]
Association		CarrierPickUpDropOffDetails	0..1	Details on the carrier that will deliver the goods.	[brad-whiop:insdes-4.6]
Generalization		WarehousingShipment			
Association	plannedDespatch	LogisticEvent	0..1	Details on the date and time the goods need to be despatched.	[brad-whiop:insdes-4.2]
Association	inlineServiceInstruction	WarehousingServiceInstruction	0..*	Details on one or more services to be performed by the logistic services seller during outbound processing.	[brad-whiop:insdes-4.7]
Association		WarehousingOutboundInstructionShipmentItem	0..*	Details on the items that need to be shipped.	
Association		ShipmentTransportationInformation	0..1	Instructions on the way the shipment needs to be transported.	[brad-whiop:insdes-4.5]
Association		CarrierTrackAndTrace	0..1	Tracking and tracing information about the package, provided by the carrier.	24-000077
Attribute	warehousingDespatchTypeCode	WarehousingDespatchTypeCode	1..1	Code specifying the type of despatch for the shipment, for example picked from stock or cross-docked.	[brad-whiop:insdes-4.3]
Attribute	warehousingDeliveryInstructionCode	WarehousingDeliveryInstructionCode	0..*	Code specifying special order / delivery conditions.	[brad-whiop:insdes-4.4] perhaps reuse some values of OrderInstructionCode

## 4.3 Warehousing Outbound Instruction – Shipment Item

### Class Diagram



### Report

The content of the WarehousingOutboundInstructionShipmentItem class, its structure and component definitions can be accessed in the GS1 Navigator: [Class Details](#) | [EDI](#) | [Navigator](#) | [GS1](#)

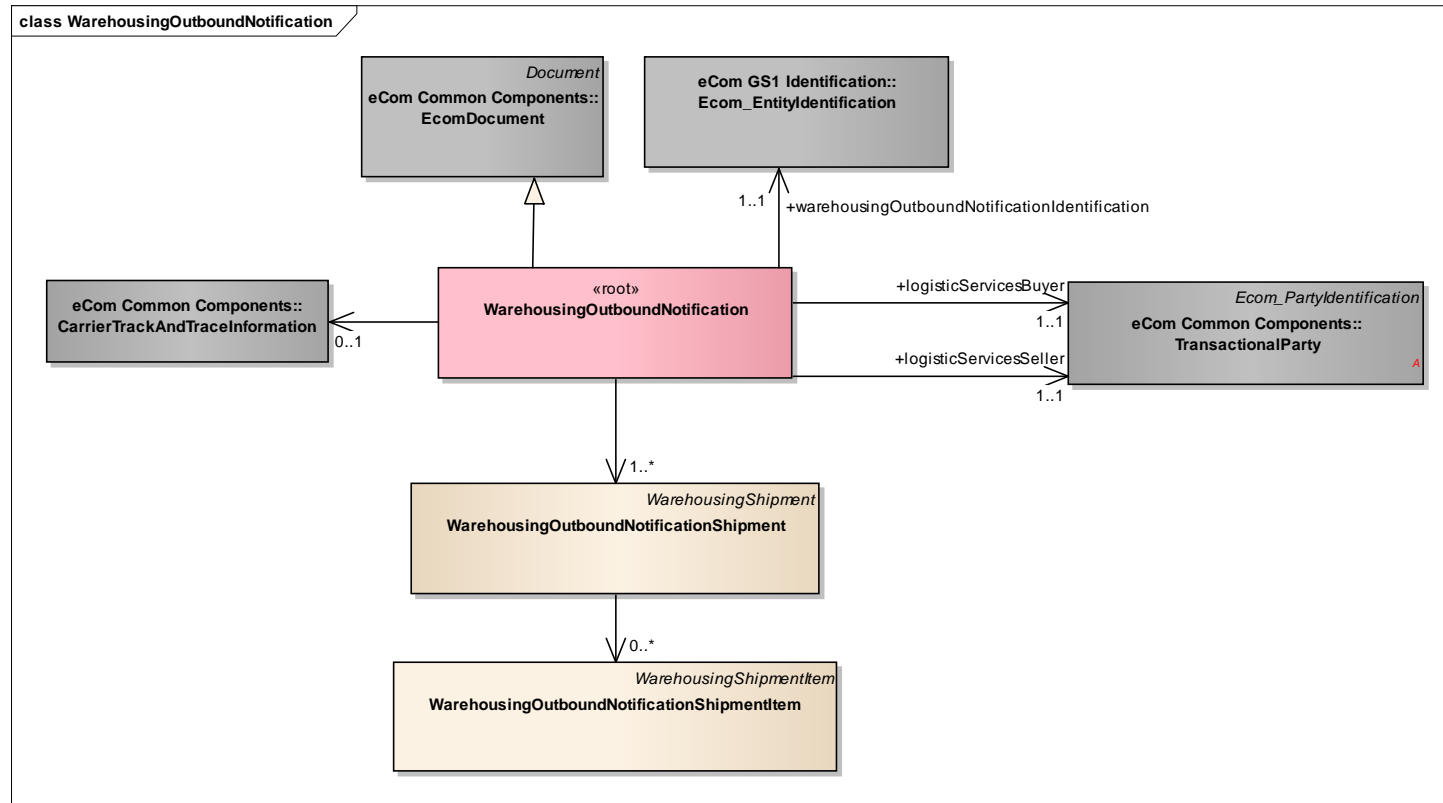
Content	Attribute / Role	Datatype /Secondary class	Multiplicity	Definition	Requirements
WarehousingOutboundInstructionShipmentItem				A shipment item is collection of trade items and related logistic units that can each be identified (uniquely) within a shipment.	[brad-whiop:insdes-5]
Association	inboundShipmentReference	Ecom_ShipmentIdentification	0..1	Reference to the cross-docked receipt from which the item has to be taken.	[brad-whiop:insdes-5.4] WR 15-000314



Content	Attribute / Role	Datatype /Secondary class	Multiplicity	Definition	Requirements
Generalization		WarehousingShipmentItem			
Association	inboundLogisticUnitReference	Ecom_LogisticUnitIdentification	0..*	Reference to the cross-docked logistic unit from which the item has to be taken.	[brad-whiop:insdes-5.5] WR 15-000314
Association	inlineServiceInstruction	WarehousingServiceInstruction	0..*	Instruction specifying a service to be carried out by the logistic services seller during the inbound process.	[brad-whiop:insdes-5.6]
Association	dangerousGoodsInformation	Ecom_DangerousGoodsInformation	0..1	Hazardous instructions applicable to delivered goods, such as where or how specified packages or containers are to be handled because of restriction from dangerous goods.	WR- 23-000170
Association		CarrierTrackAndTrace	0..1	Tracking and tracing information about the package, provided by the carrier.	24-000077
Attribute	plannedDespatchQuantity	Quantity	1..1	The quantity that is ordered / planned to be despatched.	[brad-whiop:insdes-5.1]
Attribute	deliveryInstructionCode	WarehousingDeliveryInstructionCode	0..*	Code specifying special order / delivery conditions.	[brad-whiop:insdes-5.2] perhaps reuse some values of OrderInstructionCode
Attribute	crossDockIndicator	boolean	0..1	Indication whether or not the shipped item needs to be taken from a cross-docked receipt instead of from stock.	

## 4.4 Warehousing Outbound Notification

### Class Diagram



### Report

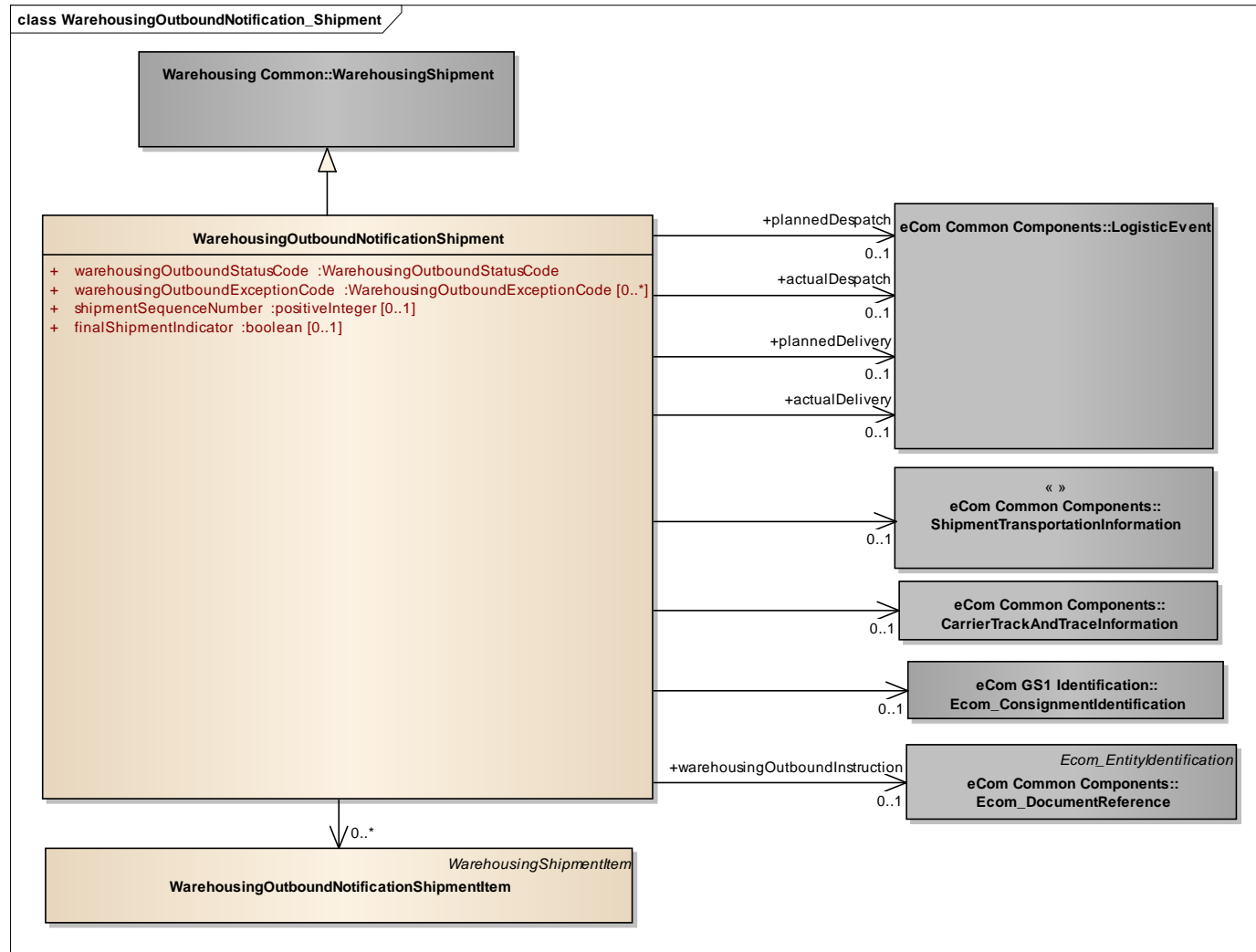
The content of the WarehousingOutboundNotification class, its structure and component definitions can be accessed in the GS1 Navigator: [Message Details](#) | [EDI](#) | [Navigator](#) | [GS1](#)



Content	Attribute / Role	Datatype /Secondary class	Multiplicity	Definition	Requirements
WarehousingOutboundNotification				Message that supports the warehouse outbound process, and enables a Logistic Services Provider (LSP) to inform his Logistic Services Client (LSC) on the status of goods shipped on behalf of the client.	
Generalization		EcomDocument		Basic information about the content of the message including version number, creation date and time.	[brad-whiop:obsta-1]
Association		WarehousingOutboundNotificationShipment	1..*	Status information on the shipments that have been shipped or are expected to be shipped.	
Association	logisticServices Seller	TransactionalParty	1..1	A party that provides logistics services to another party.	[brad-whiop:obsta-3]
Association	logisticServices Buyer	TransactionalParty	1..1	A party that purchases logistics services from another party.	[brad-whiop:obsta-2]
Association	warehousingOutboundNotificationIdentification	Ecom_EntityIdentification	1..1	The identification of the warehousing outbound notification document.	[brad-whiop:obsta-1] WR 15-000314
Association		CarrierTrackAndTraceInformation	0..1	Tracking and tracing information about the package, provided by the carrier.	WR 15-000314

## 4.5 Warehousing Outbound Notification – Shipment

### Class Diagram





**Report**

The content of the WarehousingOutboundNotificationShipment class, its structure and component definitions can be accessed in the GS1 Navigatory:

[Class Details](#) | [EDI](#) | [Navigator](#) | [GS1](#)

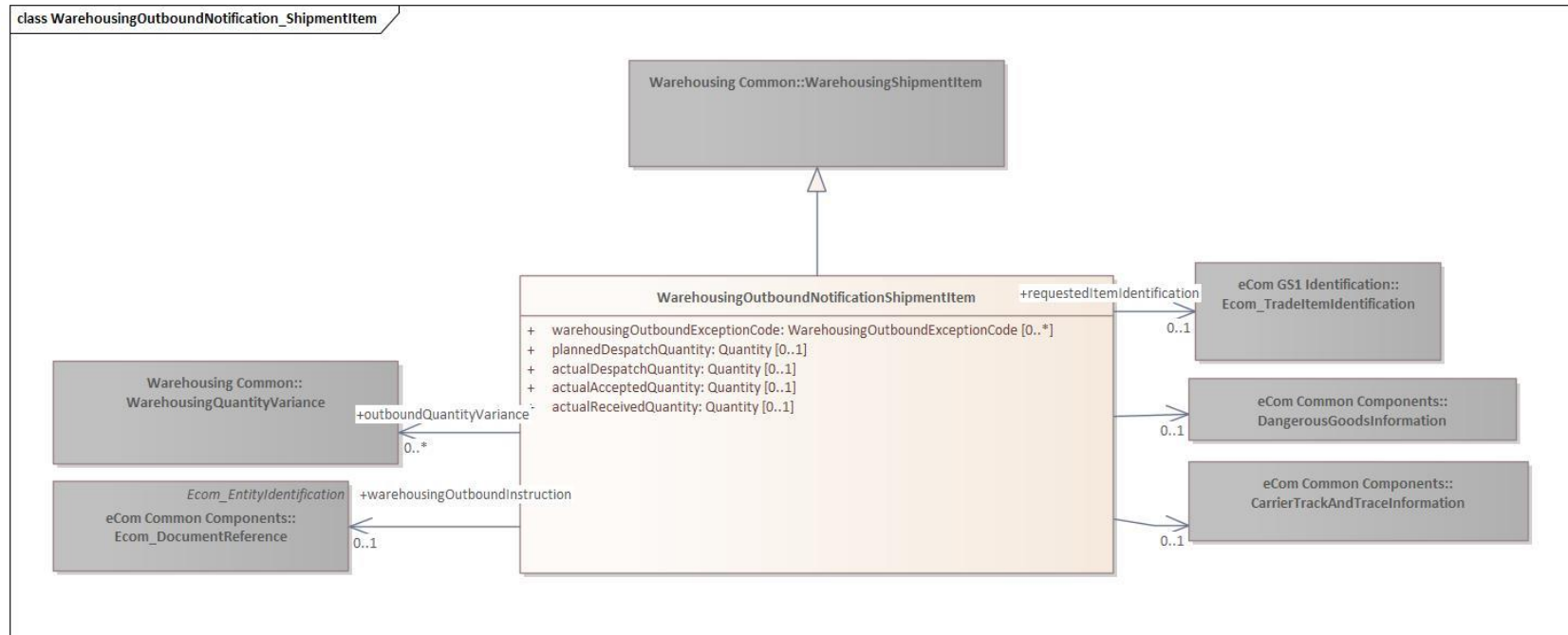
Content	Attribute / Role	Datatype /Secondary class	Multiplicity	Definition	Requirements
WarehousingOutboundNotificationShipment				A shipment is an identifiable collection of one or more Trade Items available to be transported together from the shipper (Original Consignor/Shipper), to the receiver (Final/Ultimate Consignee).	[brad-whiop:obsta-4]
Association	actualDelivery	LogisticEvent	0..1	Details on the date and time the goods were actually delivered.	[brad-whiop:obsta-4.7]
Association		Ecom_ConsignmentIdentification	0..1	Identification of the consignment that contains the shipment.	[brad-whiop:obsta-4.10.2] WR 15-000314
Generalization		WarehousingShipment			
Association	plannedDelivery	LogisticEvent	0..1	Details on the date and time the goods were planned to be delivered.	[brad-whiop:obsta-4.6]
Association		CarrierTrackAndTraceInformation	0..1	Package tracking and tracing references provided by the Carrier.	
Association	warehousingOutboundInstruction	DocumentReference	0..1	A reference to the related outbound instruction message.	
Association		WarehousingOutboundNotificationShipmentItem	0..*	Details on the items contained in the shipment.	
Association	plannedDespatch	LogisticEvent	0..1	Details on the date and time the goods were planned to be despatched.	[brad-whiop:obsta-4.4]
Association	actualDespatch	LogisticEvent	0..1	Details on the date and time the goods were actually despatched.	[brad-whiop:obsta-4.5]
Association		ShipmentTransportationInformation	0..1	Information on the way the shipment was transported.	[brad-whiop:obsta-4.10.1]



Content	Attribute / Role	Datatype /Secondary class	Multiplicity	Definition	Requirements
Attribute	warehousingOutboundStatusCode	WarehousingOutboundStatusCode	1..1	Code specifying the status of the outbound delivery.	[brad_wio:ibsta-4.2]
Attribute	warehousingOutboundExceptionCode	WarehousingOutboundExceptionCode	0..*	Codes specifying an exception that occurred during the outbound process.	[brad_wio:ibsta-4.3]
Attribute	shipmentSequenceNumber	positiveInteger	0..1	A number indicating the sequence in which shipments related to the same delivery were despatched.	
Attribute	finalShipmentIndicator	boolean	0..1	Indicator specifying if a shipment, being one of multiple shipments for the same delivery, is the final shipment. See also shipmentSequenceNumber.	

## 4.6 Warehousing Outbound Notification – Shipment Item

### Class Diagram



### Report

The content of the WarehousingOutboundNotificationShipmentItem class, its structure and component definitions can be accessed in the GS1 Navigator: [Class Details](#) | [EDI](#) | [Navigator](#) | [GS1](#)

Content	Attribute / Role	Datatype /Secondary class	Multiplicity	Definition	Requirements
WarehousingOutbound NotificationShipmentItem				A shipment item is collection of trade items and related logistic units that can each be identified (uniquely) within a shipment.	[brad-whiop:obsta-5]
Association		CarrierTrackAndTraceInformation	0..1	Package tracking and tracing references provided by the Carrier.	WR 15-000314

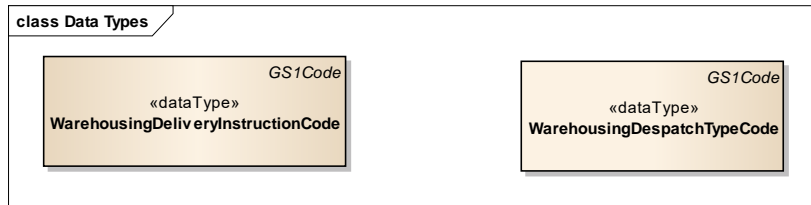


Content	Attribute / Role	Datatype /Secondary class	Multiplicity	Definition	Requirements
Association	requestedItemIdentification	Ecom_TradeItemIdentification	0..1	The identification of the trade item that was requested to be delivered, but was replaced with another trade item.	
Generalization		WarehousingShipmentItem			
Association	warehousingOutboundInstruction	Ecom_DocumentReference	0..1	A reference to the related line item in the outbound instruction.	WR 15-000314
Association	outboundQuantityVariance	WarehousingQuantityVariance	0..*	Quantity and reason of a shortage or surplus occurring in a warehousing process.	[brad-whiop:obsta-5.7]
Association	dangerousGoodsInformation	Ecom_DangerousGoodsInformation	0..1	Hazardous instructions applicable to delivered goods, such as where or how specified packages or containers are to be handled because of restriction from dangerous goods.	WR-23-000170
Attribute	warehousingOutboundExceptionCode		0..*	Codes specifying an exception that occurred during the outbound process.	[brad_wio:obsta-5.2]
Attribute	plannedDespatchQuantity	Quantity	0..1	The number of items that were planned to be despatched.	[brad_wio:obsta-5.3]
Attribute	actualDespatchQuantity	Quantity	0..1	The number of items that were despatched.	[brad_wio:obsta-5.4]
Attribute	actualAcceptedQuantity	Quantity	0..1	The number of items that were accepted by the receiver.	[brad_wio:obsta-5.5]
Attribute	actualReceivedQuantity	Quantity	0..1	The number of items that were received by the receiver.	[brad_wio:obsta-5.6]



## 4.7 Warehousing Outbound Instruction - Data Types

### Class Diagram

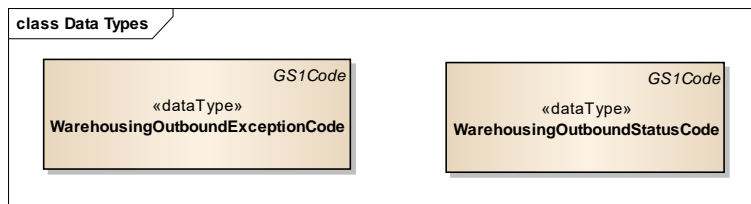


### Report

Content	Attribute / Role	Datatype /Secondary class	Multiplicity	Definition	Requirements
<b>WarehousingDeliveryInstructionCode</b>					
Generalization		GS1Code			
<b>WarehousingDespatchTypeCode</b>					
Generalization		GS1Code			

## 4.8 Warehousing Outbound Notification - Data Types

### Class Diagram



### Report

Content	Attribute / Role	Datatype /Secondary class	Multiplicity	Definition	Requirements
WarehouseOutboundExceptionCode					
Generalization		GS1Code			
WarehouseOutboundStatusCode					
Generalization		GS1Code			

## 4.9 Enumerations (message specific)

Not applicable

## 4.10 Code Lists

Class	Codelist	Navigator Link
WarehousingOutboundInstructionShipment, WarehousingOutboundInstructionShipmentItem	WarehousingDeliveryInstructionCode	<a href="#">CodeList Details   EDI   Navigator   GS1</a>
WarehousingOutboundInstructionShipment	WarehousingDespatchTypeCode	<a href="#">CodeList Details   EDI   Navigator   GS1</a>
WarehousingOutboundNotificationShipment	WarehousingOutboundExceptionCode	<a href="#">CodeList Details   EDI   Navigator   GS1</a>
WarehousingOutboundNotificationShipment	WarehousingOutboundStatusCode	<a href="#">CodeList Details   EDI   Navigator   GS1</a>



**Note:** Refer to the GS1 Navigator (Navi) for the code values.



## 5 Business Message Examples

### 5.1 Example 1

This is an example of the Warehousing Outbound Instruction message.

#### Party Information

GS1 Global Location Number	Party Type
3333333000001	Logistic Services Seller
2222222000004	Logistic Services Buyer
3333333000018	Shipper
4444444000008	Receiver

#### Message Example 1

Attribute	Value
<b>WarehousingOutboundInstruction</b>	
creationDateTime	2012-07-17 12:15
documentStatusCode	ORIGINAL
documentActionCode	ADD
<b>EntityIdentification (+warehousingOutboundInstructionIdentification)</b>	
entityIdentification	INSDDES00123
<b>TransactionalParty (+logisticServicesSeller)</b>	
gln	3333333000001
<b>TransactionalParty (+logisticServicesBuyer)</b>	
gln	2222222000004
<b>WarehousingOutboundInstructionShipment (+)</b>	
warehousingDespatchTypeCode	WAREHOUSE_SHIPMENT
<b>TransactionalParty (+receiver)</b>	
gln	4444444000008
<b>TransactionalParty (+shipper)</b>	
gln	3333333000018
<b>ShipmentTransportationInformation (+)</b>	
transportServiceCategoryType	30
transportServiceLevelCode	STANDARD_SERVICE
<b>LogisticEvent (+plannedDelivery)</b>	
<b>DateRange (+logisticEventPeriod)</b>	
beginDate	2012-07-18
beginTime	15:00
endDate	2012-07-18
endTime	16:00

Attribute	Value
<b>WarehousingOutboundInstructionShipmentItem</b>	
lineItemNumber	1
plannedDespatchQuantity	30
TransactionalTradeItem (+)	
gtin	01111111000120
<b>WarehousingServiceInstruction (+inlineServiceInstruction)</b>	
warehousingServiceConditionCode	BUILD_PALLET
<b>WarehousingServiceAttribute (+)</b>	
warehousingServiceAttributeTypeCode	PALLET_HEIGHT
warehousingServiceAttributeMeasurement	180 cm

## 5.2 Example 2

This is an example of the Warehousing Outbound Notification message.

### Message Example 2

Attribute	Value
<b>WarehousingOutboundNotification</b>	
creationDateTime	2012-07-18 12:15
documentStatusCode	ORIGINAL
documentActionCode	ADD
<b>EntityIdentification (+warehousingOutboundNotificationIdentification)</b>	
entityIdentification	OBSTA00113
<b>TransactionalParty (+logisticServicesSeller)</b>	
gln	3333333000001
<b>TransactionalParty (+logisticServicesBuyer)</b>	
gln	2222222000004
<b>WarehousingOutboundNotificationShipment</b>	
warehousingOutboundStatusCode	READY_TO_SHIP
<b>TransactionalParty (+receiver)</b>	
gln	4444444000008
<b>TransactionalParty (+shipper)</b>	<b>gln: 3333333000018</b>
<b>ShipmentIdentification (+)</b>	
gsin	33333330000114050
<b>WarehousingOutboundNotificationShipmentItem</b>	
lineItemNumber	1
warehousingOutboundExceptionCode	QUANTITY_ROUNDED
plannedDespatchQuantity	30



Attribute	Value
actualDespatchQuantity	32
<b>TransactionalTradeItem (+)</b>	
gtin	01111111000120
<b>WarehousingQuantityVariance (+outboundQuantityVariance)</b>	
varianceQuantity	2
warehousingQuantityVarianceCode	QUANTITY_OVER
<b>LogisticUnit</b>	
tradeItemQuantity	16
<b>LogisticUnitIdentification (+)</b>	
sscc	133333330000003450
<b>LogisticUnit</b>	
tradeItemQuantity	16
<b>LogisticUnitIdentification (+)</b>	
sscc	133333330000003450

### 5.3 Example 3

This is a **complex example** of the Warehousing Outbound Instruction message. Logistic Services Buyer 2222222 instructs his Logistic Services Seller (3333333, the warehouse service provider) that goods need to be shipped and transported as follows:

- By a LSB designated carrier (5555555) to an LSB designated freight forwarder (6666666).
- Freight forwarder (6666666) will transport the goods overseas to a de-consolidation centre (4444444001104) controlled by the customer (4444444).
- From there the customer will arrange transport to the final customer location (4444444002224).

#### Message Example 3

Attribute	Value	Comment
<b>WarehousingOutboundInstruction</b>		
creationDateTime	2012-07-17 12:15	
documentStatusCode	ORIGINAL	
documentActionCode	ADD	
<b>EntityIdentification (+warehousingOutboundInstructionIdentification)</b>		
entityIdentification	INSD00123	
<b>TransactionalParty (+logisticServicesSeller)</b>		The LS SELLER has a single central GLN to identify the single Integration Services Point of Contact for that LSS.
gln	3333333000001	
<b>TransactionalParty (+logisticServicesBuyer)</b>		The LS BUYER has a single central GLN to identify the single Integration Services Point of Contact for that LSB.
gln	2222222000004	

Attribute	Value	Comment
<b>WarehousingOutboundInstructionShipment (+)</b>		
warehousingDespatchTypeCode	WAREHOUSE_SHIPMENT	
<b>TransactionalParty (+receiver)</b>		Identifies <b>one of multiple</b> entities within the Customers (Material Buyer) organisation.
gln	44444444000008	
<b>TransactionalParty (+shipper)</b>		Identifies the warehouse from which the LSS is expected to despatch the Order. The LS <b>SELLER may operate many different</b> warehousing sites even multiple different sites for the same LS BUYER. The GLN used to identify the sites are the GLN assigned and owned by the LS SELLER.
gln	3333333000018	
<b>TransactionalParty (+shipTo)</b>		Identifies the facility (de-consolidation centre) where the Customer wants to get the Order delivered to by the forwarder. This GLN is assigned by the <b>Customer who may operate many different facilities</b> each of which (may be) identified with a GLN. The Customer should then also clearly identify/include this GLN in the Order placed on the Material Supplier (the LS BUYER).
gln	44444444001104	
<b>TransactionalParty (+ultimateConsignee)</b>		Identifies the final delivery location for the Order. This GLN is assigned by the Customer (who is ultimately responsible for the delivery to this point). Clearly the Customer should include the appropriate GLN for the ultimateConsignee in the original Order placed on the Material Supplier (the LS BUYER).
gln	44444444002224	
<b>ShipmentTransportationInformation (+)</b>		
transportServiceCategoryType	30	
transportServiceLevelCode	STANDARD_SERVICE	
<b>TransactionalParty (+carrier)</b>		Identifies the specific entity within the Carriers organisation that will be responsible for the physical movement of the Order from the warehouse
gln	5555555000005	
<b>TransactionalParty (+freightForwarder)</b>		Identifies the location of the freight forwarder where the goods need to be dropped-off.
gln	6666666000002	
<b>LogisticEvent (+plannedDelivery)</b>		

Attribute	Value	Comment
<b>DateOptionalTime (+logisticEventDateTime)</b>		
date	2012-07-25	
<b>WarehousingOutboundInstructionShipmentItem</b>		
lineItemNumber	1	
plannedDespatchQuantity	30	
<b>TransactionalTradeItem (+)</b>		
gtin	01111111000120	

## 6 Implementation Considerations

### 6.1 User Guide

The Functional User Guide contains more information about the structure and content of the Warehouse Outbound Instruction and Notification message:

[http://www.gs1.org/docs/ecom/xml/3/3.4/eCom-Trade\\_messages.html#WarehouseOutboundInstructionandNotification](http://www.gs1.org/docs/ecom/xml/3/3.4/eCom-Trade_messages.html#WarehouseOutboundInstructionandNotification)

### 6.2 Message Specific Considerations

Not applicable

## 7 Summary of Changes

Any change in the GS1 standards is done based on the Work Request (WR) submitted by the GS1 User Companies or Member Organisations. All Work Requests are documented in the Work Request system available on the GS1 website: <http://wr.gs1.org>. The system is accessible to registered users. New visitors need to register first, to be able to access it. WRs can be searched by the number referenced in tables below, see: Search Work Requests. The number starts with the two last digits of the year when it was submitted, followed by the consecutive number within that year.



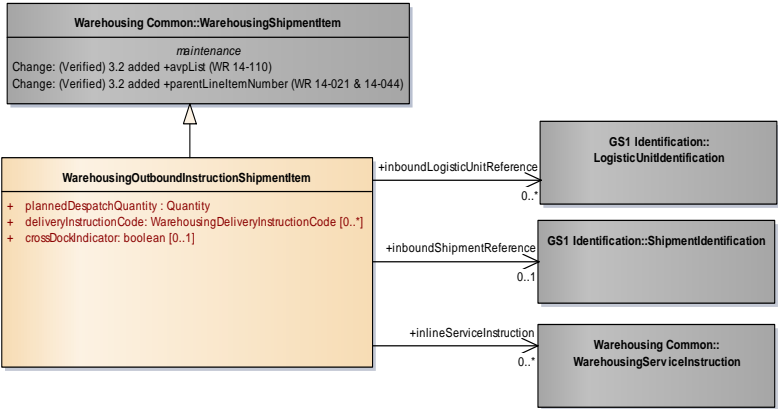
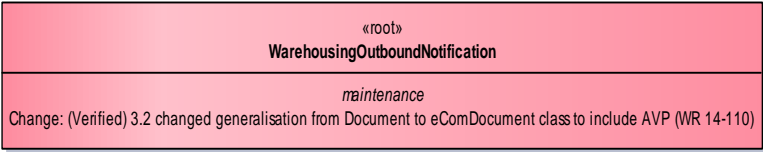

**Note:** WRs submitted earlier than February 2012 should be searched in Old Change Requests.

### 7.1 BMS Release 3.1

First release

### 7.2 BMS Release 3.2

Change	Associated WR
<p>class WarehousingOutboundInstruction - maintenance view</p>	<p><b>14-000110</b></p> <p>Add Attribute Value Pair at the root, line item and sub line item levels</p>
<p>class WarehousingOutboundInstructionShipment - maintenance view</p>	<p><b>14-000074</b></p> <p>Add route of the transport and or truck-ID in a GS1 SML warehouse outbound instruction message</p>

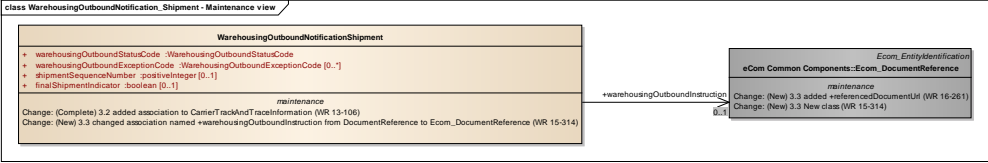
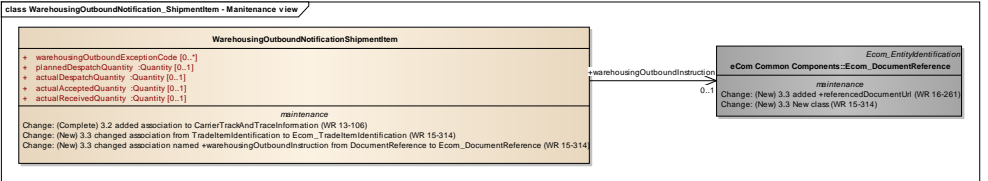
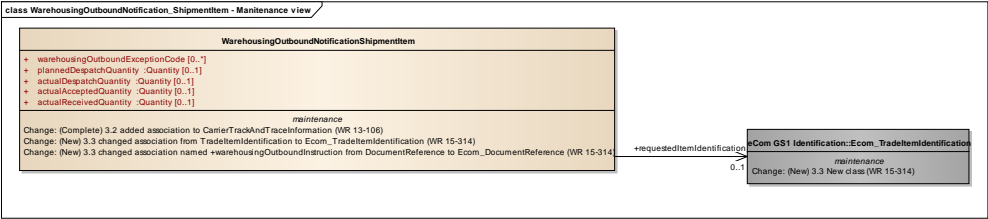
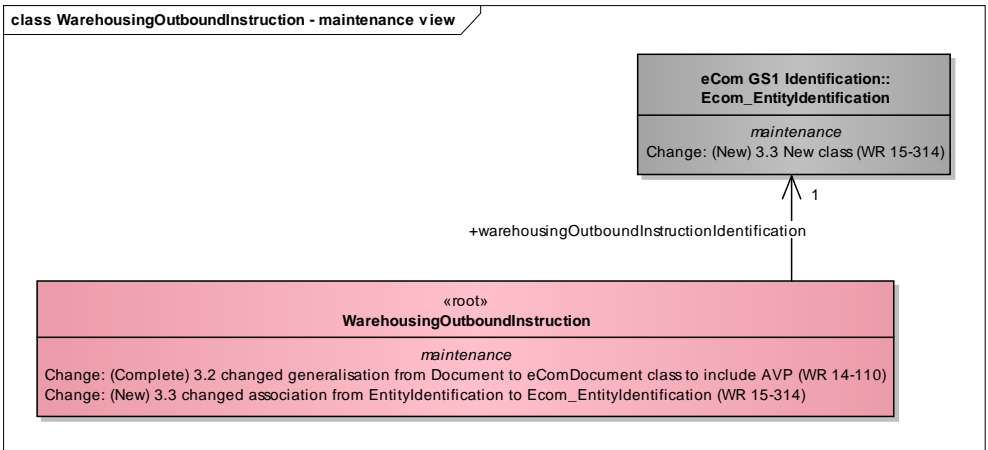
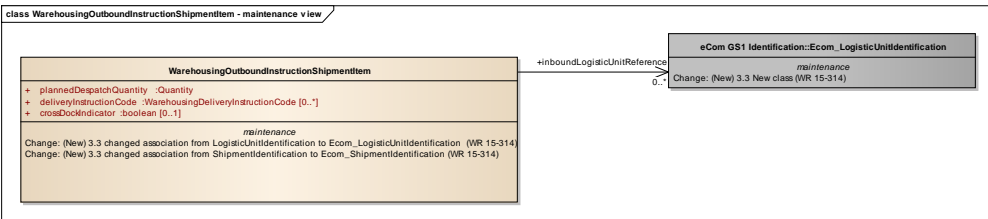
Change	Associated WR
<p>class WarehousingOutboundInstructionShipmentItem - maintenance view</p> 	<p><b>14-000110</b></p> <p>Add Attribute Value Pair at the root, line item and sub line levels</p>
<p>class WarehousingOutboundNotification - maintenance view</p> 	<p><b>14-000110</b></p> <p>Add Attribute Value Pair at the root, line item and sub line levels</p>
<p>class WarehousingOutboundNotification_Shipment - Maintenance view</p> 	<p><b>13-000106</b></p> <p>Add to warehousing messages carrier track and trace information with: package tracking number and carrier track and trace URL.</p>

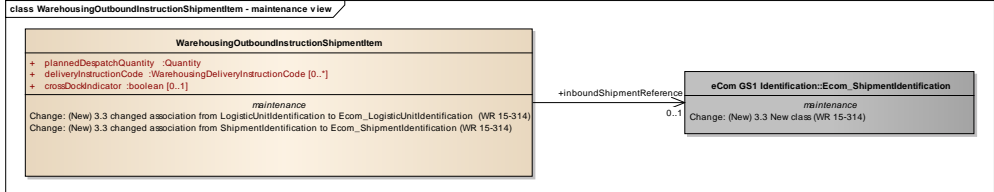
Change	Associated WR
<div><div>class WarehousingOutboundNotification_ShipmentItem - Maintenance view</div><div><div>WarehousingOutboundNotificationShipmentItem</div><div><div>+ warehousingOutboundExceptionCode [0..*] + plannedDespatchQuantity: Quantity [0..1] + actualDespatchQuantity: Quantity [0..1] + actualAcceptedQuantity: Quantity [0..1] + actualReceivedQuantity: Quantity [0..1]</div><div><div><i>maintenance</i></div><div>Change: (Verified) 3.2 added association to CarrierTrackAndTraceInformation (WR 13-106)</div></div></div></div></div>	<div><div><b>WR 13-106</b></div><div>Add to warehousing messages carrier track and trace information with: package tracking number and carrier track and trace URL.</div></div> <div><div><b>WR 14-110</b></div><div>Add Attribute Value Pair at the root, line item and sub line item levels</div></div>

## 7.3 BMS Release 3.3

Change	Associated WR
<p>Created Ecom_EntityIdentification class and changed association from the previous EntityIdentification</p> <div><p>class WarehousingOutboundNotification - maintenance view</p><div><div><div>eCom GS1 Identification:: Ecom_EntityIdentification</div><div><i>maintenance</i></div><div>Change: (New) 3.3 New class (WR 15-314)</div></div><div><div>+warehousingOutboundNotificationIdentification</div><div>1..1</div></div><div><div>«root» WarehousingOutboundNotification</div><div><i>maintenance</i></div><div>Change: (Complete) 3.2 changed generalisation from Document to eComDocument to include AVP (WR 14-110) Change: (New) 3.3 added association to CarrierTrackAndTraceInformation (WR 13-106) Change: (New) 3.3 changed association from EntityIdentification to Ecom_EntityIdentification (WR 15-314)</div></div></div></div>	<p><b>15-000314</b></p> <p>Make GS1 identification keys optional in GS1 EDI XML</p>
<p>Associated CarrierTrackAndTraceInformation class</p> <div><p>class WarehousingOutboundNotification - maintenance view</p><div><div><div>eCom Common Components:: CarrierTrackAndTraceInformation</div><div><i>maintenance</i></div><div>Change: (Complete) 3.2 new class (WR 13-106)</div></div><div><div>0..1</div></div><div><div>«root» WarehousingOutboundNotification</div><div><i>maintenance</i></div><div>Change: (Complete) 3.2 changed generalisation from Document to eComDocument to include AVP (WR 14-110) Change: (New) 3.3 added association to CarrierTrackAndTraceInformation (WR 13-106) Change: (New) 3.3 changed association from EntityIdentification to Ecom_EntityIdentification (WR 15-314)</div></div></div></div>	<p><b>13-000106</b></p> <p>Add carrier track and trace information to warehousing messages</p>



Change	Associated WR
<p>Created Ecom_DocumentReference class and changed association from the previous DocumentReference</p> 	<b>15-000314</b> Make GS1 identification keys optional in GS1 EDI XML
<p>Created Ecom_DocumentReference class and changed association from the previous DocumentReference</p> 	<b>15-000314</b> Make GS1 identification keys optional in GS1 EDI XML
<p>Created Ecom_TradeItemIdentification class and changed association from the previous TradeItemIdentification</p> 	<b>15-000314</b> Make GS1 identification keys optional in GS1 EDI XML
<p>Created Ecom_EntityIdentification class and changed association from the previous EntityIdentification</p> 	<b>15-000314</b> Make GS1 identification keys optional in GS1 EDI XML
<p>Created Ecom_LogisticUnitIdentification class and changed association from the previous LogisticUnitIdentification</p> 	<b>15-000314</b> Make GS1 identification keys optional in GS1 EDI XML

Change	Associated WR
<p>Created Ecom_ShipmentIdentification class and changed association from the previous ShipmentIdentification</p> 	<p><b>15-000314</b></p> <p>Make GS1 identification keys optional in GS1 EDI XML</p>

## 7.4 BMS Release 3.4

No work requests. Indirect changes due to upgrade to new Shared and eCom Common libraries.

## 7.5 BMS Release 3.5

No work requests. Indirect changes due to upgrade to new Shared and eCom Common libraries.

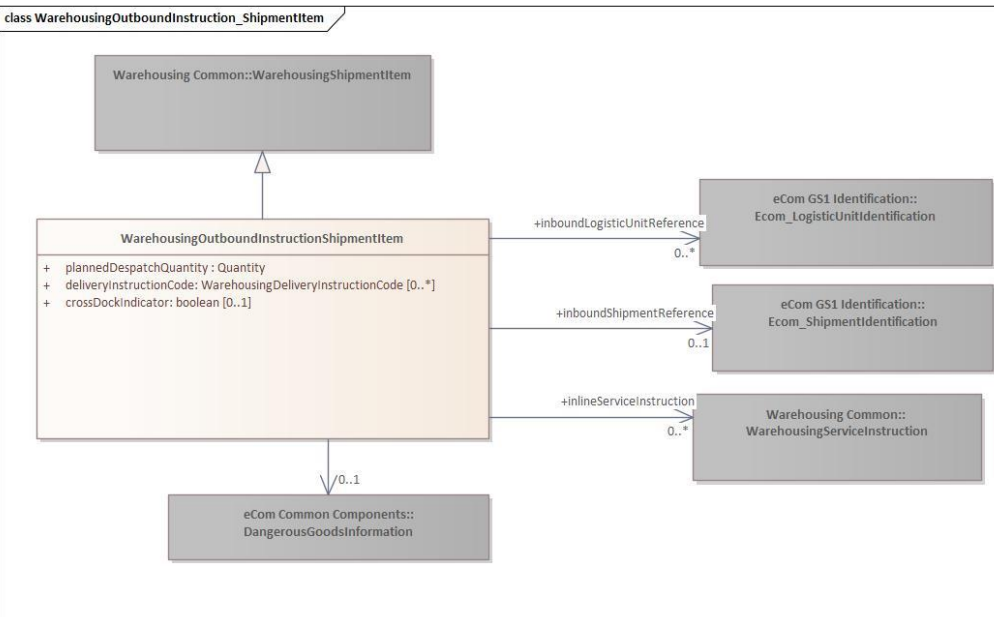
## 7.6 BMS Release 3.5.1

No work requests. Indirect changes due to upgrade to new Shared and eCom Common libraries.

## 7.7 BMS Release 3.6

No work requests. Indirect changes due to upgrade to new Shared and eCom Common libraries.

## 7.8 BMS Release 3.7

Change	Associated WR
<p>■ Added <b>new association</b> to ecom:common dangerous goods information to Line item:</p> 	<p><b>23-000170</b></p>



Change	Associated WR
<p>■ Added <b>new association</b> to ecom:common dangerous goods information to Line item:</p> <pre> class WarehousingOutboundNotification_ShipmentItem     Warehousing Common::WarehousingShipmentItem     + warehousingOutboundExceptionCode: WarehousingOutboundExceptionCode [0..*]     + plannedDespatchQuantity: Quantity [0..1]     + actualDespatchQuantity: Quantity [0..1]     + actualAcceptedQuantity: Quantity [0..1]     + actualReceivedQuantity: Quantity [0..1]     + outboundQuantityVariance: Warehousing Common::WarehousingQuantityVariance 0..*     + warehousingOutboundInstruction: eCom Common Components::Ecom_DocumentReference 0..1     + requestedItemIdentification: eCom GS1 Identification::Ecom_TradeItemIdentification 0..1     + dangerousGoodsInformation: eCom Common Components::DangerousGoodsInformation 0..1 </pre>	<p><b>23-000170</b></p>
<p>■ Adding a new association to CarrierTrackAndTrace into the Shipment item and to the Shipment level to: Outbound Instruction and to Outbound Notification as optional fields.</p>	<p><b>24-000077</b></p>

## 8 Appendices

Not Applicable

## 9 Acknowledgements

### 9.1.1 Work Group

Function	Name	Company / organisation
Co-chair	Rossner (Pottier), Natascha	GS1 France
Co-chair	Schmidt, Tom Eric	August Storck KG
Member	Bemrose, Jonathan	R&R Ice Cream
Member	Bodemer, Petra	dm-drogerie markt GmbH + Co. KG
Member	Boikanyo, Rebene	GS1 South Africa / Consumer Goods Council of South Africa
Member	Canada, ON	M3B 3L1
Member	Carlson, Jim	General Mills, Inc.
Member	Chresta, Richard	GS1 Switzerland
Member	Cook, Don	Wal-Mart Stores, Inc.
Member	Cox, Marc	Philips Electronics N.V.
Member	Darnell, David	Systrends
Member	De Flou, Nele	GS1 Belgium & Luxembourg



Function	Name	Company / organisation
Member	Dicks, Arne	GS1 Germany
Member	Duvinger, Karina	GS1 Sweden
Member	Foerderer, Klaus	GS1 Germany
Member	Gathmann, Stefan	GS1 Ireland
Member	Grangard, Anders	GS1 Global Office
Member	Harpell, Eileen	GS1 Community Room Staff
Member	Hand, Phil	JDA Software
Member	Herregodts, Kurt	GS1 Belgium & Luxembourg
Member	Kempkes, Fred	Unilever N.V.
Member	Kernan, Brendan	GS1 Ireland
Member	Kidd, Robin	Nestle
Member	Krid, Anne-Claire	GS1 France
Member	Lanoue, Tom	General Mills, Inc.
Member	Laur, Rita	GS1 Canada
Member	Lenman, Mia	GS1 Sweden
Member	Lerch, Hanjoerg	METRO Group
Member	Moberg, Dale	Axway
Member	Montes de Oca, Alejandra	GS1 Mexico
Member	Ng, Ella	GS1 Australia
Member	Peelen, Esther	GS1 Netherlands
Member	Pelekies, Andreas	GS1 Germany
Member	Perrier, Patricia	GS1 France
Member	Przybilla, Christian	GS1 Germany
Member	Pujol, Xavier	GS1 Spain
Member	Racek, Greg	Wal-Mart Stores, Inc.
Member	Repetto, Mirko	GS1 Italy
Member	Robba, Steven	1WorldSync Holdings, Inc.
Member	Rosell, Pere	GS1 Spain
Member	Rosenberg, Steven	GS1 US
Member	Schmid, Sue	GS1 Australia
Member	Schneider, Christian	GS1 Switzerland
Member	Sehorz, Eugen	GS1 Austria
Member	Sharma, Vishal	General Mills, Inc.
Member	Shimazaki, Ayako	GS1 Japan
Member	Sion, Emilie	GS1 France
Member	Souza, Nadia	GS1 Brasil
Member	Strand, Roman	GS1 Germany
Member	Tan, Milton	GS1 Malaysia
Member	Tompsett, Simon	Waitrose
Member	Trelle, Ute	1WorldSync Holdings, Inc.

Function	Name	Company / organisation
Member	Tse, Steve	GS1 Hong Kong
Member	Tyson, Betty	Knouse Foods Cooperative, Inc
Member	Van den Bergh, Senne	GS1 Belgium & Luxembourg
Member	Van der Eijk, Pim	OASIS - Sonnenglanz Consulting BV
Member	Veldhuis, Saskia	Procter & Gamble Co.
Member	Welch, Shan	GS1 UK
Member	Westerkamp, Jan	GS1 Netherlands
Member	Wilson, Mary	GS1 US
Member	Windsperger, Bekki	Best Buy Co., Inc.
Member	Yang, Shaopeng	GS1 China
Member	Yusdiar, Dani	GS1 Indonesia
Member	Zwanziger, Greg	SUPERVALU

### 9.1.2 Development Team Members

Function	Name	Organisation
GSMP Process Lead	David Buckley	GS1 Global Office
Technical Development Lead	Miklos Bolyky	GS1 Global Office
Peer Review	Mark Van Eeghem	GS1 Global Office